

The image features a solid orange circle on the left side containing the word "Pollight" in a bold, black, sans-serif font. The background is a light blue color with a white line-art technical drawing of a mechanical component, possibly a lighting fixture or a camera lens assembly, shown from a perspective view. The drawing includes various structural elements, mounting brackets, and a central circular opening with several small holes around its perimeter.

Pollight



Global Problem:



Buildings account for over 40% of global power consumption, yet only 2% of buildings have any kind of power consumption controls*.

*Memoori, July 2013, Smart Buildings: The market for connecting smart grid with BEMS 2013 to 2017

THE FUTURE OF SMART BUILDING MANAGEMENT






Pollight's goals:

Optimize energy use.

Significant maintenance manpower reduction.

Comprehensive, Easy to use manager web platform.



Implementing a BAS requires wiring a building with the communication wires needed for the specific system



Wiring accounts for about 40% of the total BAS cost as upfront investment



Wiring is a Key Cost

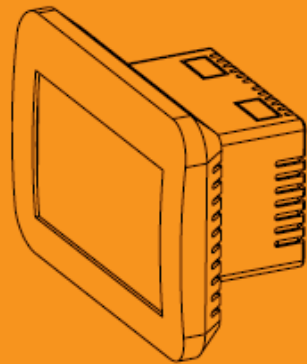
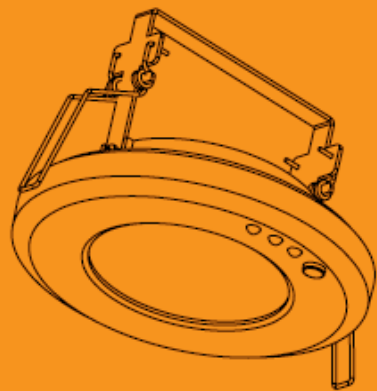
Based on WiFi Pollight's solution
avoids the need of costly
upfront implementation



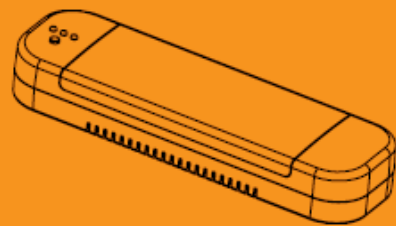
Pollight allows seamless central control of:



Emergency lighting





HVAC/Thermostat



Lighting

Pollight's solution addresses the full scope of Building Automatiom System (BAS):

Area	Description	Features
	Control lights	Schedule, dimming
	Control HVAC	Set temperature, schedule, preventive maintenance, sun direction, additional sensors
EXIT	Control Emergency Lights	Automated testing and reports



Pollight's Command & Control Monitor system:

Cost

No installation cost.

Optimize up to to 40% energy use.

Smart manage of manpower.

Remote and preventive maintenance control.

Control

Control critical building functions from anywhere.

A facility manager can create their own operation scripts to custom tailor the usage of building functions and resources.

Open Architecture

Open protocol based solution.

Module based, allowing for additional functions and scalable for multiple sites.

Read and manage other smart devices from different vendors.

Market size:



The worldwide market is worth billions.



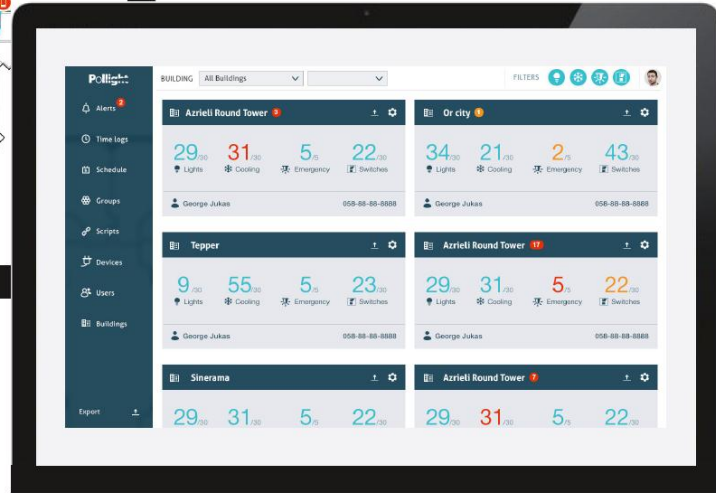
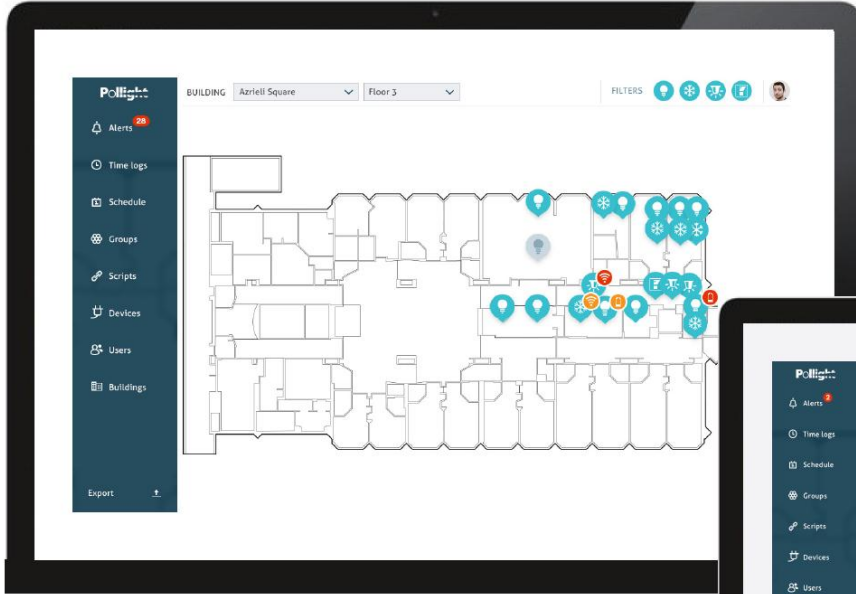
- In the U.S. alone there are 4.9 million commercial buildings¹.
- The worldwide market is worth billions.
- Expenditure in the US market will grow from 13.1\$ billion in 2012 to 16.5\$ in 2017².

¹ U.S. energy information administration

² Verdantix, June 2013, US Energy Management Spend 2012-2017.

Pollight's Cloud based web application





MANAGEMENT TEAM:



Jacob Pollack, Founder & CEO - Jacob has 20 years of experience in developing and leading embedded systems projects at Elta and EL-OP at Israel Aviation Industries. Jacob has a Bsc, in Computer Engineering from the Jerusalem College of Technology.



Moshe Peleg, R&D Manager - Moshe has 17 years of experience in software development for PCs and handheld computers. Moshe has also been 15 years a lecturer at Hadassah College of Technology since 1996, teaching Unix operating system, Artificial intelligence and Internet.



Eytan Brucker, COO - Eytan has 10 years of experience in leading major projects with rich resources as part of his previous position at the MOD (Ministry of Defense). Eytan has M.Sc. at Aerospace Engineering from the Technion.



Thank You !

Pollight

Eytan Brucker
+972-5432-76688 (Israel)
b.eytan@gmail.com

Jacob Pollack
+972-52-357797 (Israel)
jacob_pol@yahoo.com

Ray Krigel
+1-510-734-3809 (California)
reutkrigel@gmail.com